

Calvin University

Calvin Digital Commons

Symposium on Worship Archive

Hymnary.org: a Database of Hymnody

Calvin Symposium on Worship

Harry Plantinga
Calvin College

Greg Scheer
Church of the Servant

Follow this and additional works at: <https://digitalcommons.calvin.edu/uni-cicw-symposium>

Recommended Citation

Calvin Symposium on Worship; Plantinga, Harry; and Scheer, Greg, "Hymnary.org: a Database of Hymnody" (2023). *Symposium on Worship Archive*. 48.
<https://digitalcommons.calvin.edu/uni-cicw-symposium/2011/allitems/48>

This Event is brought to you for free and open access by the Calvin Institute of Christian Worship at Calvin Digital Commons. It has been accepted for inclusion in Symposium on Worship Archive by an authorized administrator of Calvin Digital Commons. For more information, please contact dbm9@calvin.edu.



Hymnary.org: a Database of Hymnody

Harry Plantinga, Calvin College

Greg Scheer, CICW, Church of the Servant CRC

Have you ever struggled to find just the right hymn? www.Hymnary.org is a powerful search engine that helps you find hymns, search hymnals, and research congregational songs. In this session Harry Plantinga and Greg Scheer will introduce you to the Hymnary, lead you through simple and advanced searches, and show you ways to become involved as a contributor.

In this session:

1. What is Hymnary.org?
2. Using Hymnary.org
3. How you can help: contributing to Hymnary.org

Hymnary.org is a large database of hymnody supporting the needs of music leaders, scholars, researchers, and the interested public. It includes many full texts, scores, page images, MIDI files, recordings, and background information on tunes, texts, and authors.

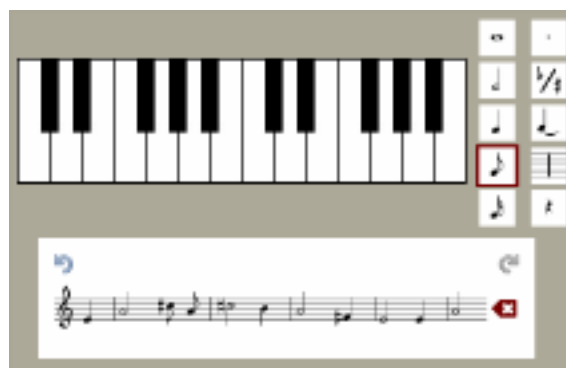
Contents

- 5,044 hymnals
- 1,043,563 hymn instances
- 187,023 texts
- 11,810 tunes
- 9,775 media files

A **National Endowment for the Humanities*** grant is supporting the addition of the **Dictionary of North American Hymnology**, a 50-year-old project to index all hymnals published in North America through 1978. This is the most comprehensive index of hymn publication information, with information on nearly 5,000 hymnals and over one million hymn instances. We'll also be scanning about 1,000 hymnals from the Princeton Theological Seminary collection.

Hymnary.org offers full texts, scores, and associated resources such as hymn notes, instrumental arrangements, and PowerPoints for projection.

A powerful **search engine** allows you to search by full text, first line, title, scripture reference, key signature, meter, incipit, and more. Our **melodic search** tool is the only place you can go on the Internet to search for a hymn by typing in a few notes.



Hymnary.org was built with support from the National Endowment for the Humanities, the Calvin Institute of Christian Worship (www.calvin.edu/worship), and the Christian Classics Ethereal Library (www.ccel.org).

* Any views, findings, conclusions, or recommendations expressed in this website do not necessarily represent those of the National Endowment for the Humanities.

Become an Editor

Tasks below are linked on the page

http://www.hymnary.org/wiki/Training_Material_for_Editors:

- Contact Tina Schneider (Project editor)
- Take the 22-question quiz
- Edit the training hymnal (5 hymns)
- Post questions at <http://www.hymnary.org/forum/57>

Enter Hymn Texts

First line: enter exactly as written, using identical capitalization and punctuation. Include only ? or ! as line-ending punctuation. If you don't have the first line, use [title] (the title in brackets).

Title: If there is no title, leave it blank; otherwise enter exactly. Include subtitle if any.

Meter: exactly as it appears in print.

Publication date: only if it appears on the page. Include "alt.," etc. Examples: "1826, alt.," "7th Century", "c. 1826", "about 1540"

Authority identifier: enter some text from the first line and locate the appropriate authority identifier. It may be necessary to open a separate browser window and search for the first line to find the appropriate identifier.

Text persons: enter as described below.

Source: Include only if the hymnal gives a source attribution. Examples include "English Traditional", "<i>A Collection of Hymns</i>, London, c. 1757"

Enter Hymn Tunes

Tune name: enter in ALL CAPS. If no tune name is given, use [first line] (first line in brackets).

Meter: exactly as it appears in print. If none is given, omit.

Incipit: optional. See <http://www.hymnary.org/wiki/Incipit>

Key signature: optional. See http://www.hymnary.org/wiki/Key_signatures

Authority identifier: sometimes different tunes use the same name, so open a new browser window and do a search to make sure you have the right tune authority identifier.

Tune persons: enter as described below.

Source: Include only if the hymnal gives a source. For example, "Adapted from Piae Cantiones,, 1582"

Add a Text or Tune Person

Name: enter exactly as it appears in the hymnal, even if incorrect. Include birth and death years if given.

Authority: Enter part of the name and select the correct authority entry. If the person is not in the list, click *Add a new person...* to add an authority entry.

Relationship: select the appropriate one from the drop-down list. If none is appropriate, you can add one.

Date: give the date of authorship if it is given in the hymnal.

Proofread a Hymnal

Download spreadsheet: on a hymnal home page, click *Editor Tools* -> *Download page as CSV*. Save the CSV file and open it in a spreadsheet program. Correct the data in the spreadsheet according to the guidelines. Repeat for the other spreadsheets for a hymnal. Often there will not be any information in some spreadsheets, so nothing need be done with them.

Email the spreadsheets to submissions@hymnary.org.

Add Page Images

Acquire scans: scan a hymnal or find page images for a hymnal at a Web site such as Internet Archive (www.archive.org) or Google Books (books.google.com). Search for "Hymnal".

Download the hymnal: save JPEG or PNG images if possible, or save a PDF file of the hymnal. Extract the images from the PDF file using a utility such as "Some PDF Image Extract" (Windows). Uploaded images may be JPEG, PNG, or GIF.

Rename the images if necessary so that when listed in alphabetical order by filename they are in the correct order.

Reorder the hymnal if necessary (click *Arrange this Hymnal* in the Editor Tools menu)

Upload a zip file of the images by clicking *Editor Tools* -> *Upload page images*.

Connect page images to hymns.

Add a Hymnal (online)

Click Hymnal in the *Add New* section of *Editor Tools*.

HymnalID: select a HymnalID of up to eight characters, usually selected from the initials of important words in the title followed by the date of publication, e.g. HMEC1885.

CCELDocID, BookID: leave blank.

Banner URL: If you wish to add a banner image to the hymnal home page, upload it and enter the URL here.

Image URL: upload a scan of the cover and enter the URL here.

Categories: examples include Baptist, Catholic, Episcopal, Lutheran, Mennonite, Methodist, Orthodox, Presbyterian, etc. Use auto-complete suggestions when possible.

Denomination: enter official denomination name. Use auto-complete suggestions when possible.

Hymnal Persons: enter names of author, editor, etc. Enter your own name as Hymnary.org Indexer or Hymnary.org Proofreader if appropriate.

Add a hymnal (spreadsheets)

Download the four spreadsheets for a small hymnal such as the *Missionary Hymnal (1906)* by clicking *Editor Tools*.

Delete the information that is already in the spreadsheets and fill them out for the hymnal you are adding. You won't need all the templates if your hymnal doesn't have indexes, etc.

Save the spreadsheets in XML format.

Email the spreadsheets to submissions@hymnary.org

Planning a Worship Service with Hymnary.org

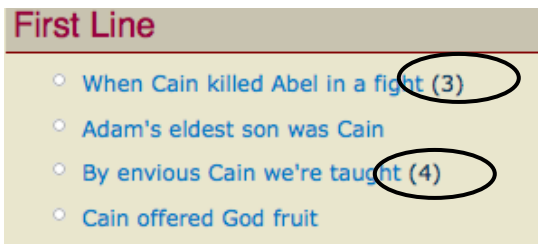
How I used hymnary.org in planning for the symposium service #1:

- Sermon theme: Cain and Abel (Genesis 4:1-6); sermon title "A Mark of Grace"
- Sojourn Community Church musicians (rock, bluegrass), string quartet, Gettys
- Aim for good blend of music styles; include Psalm, confession, prayer, etc

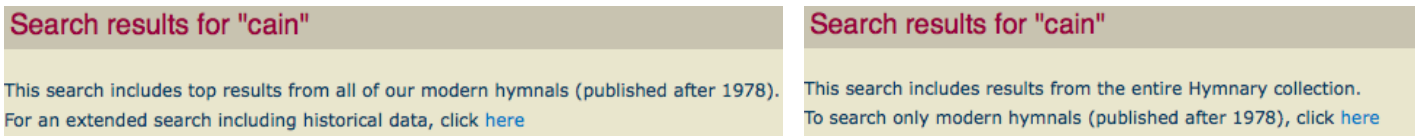
The search everything box:



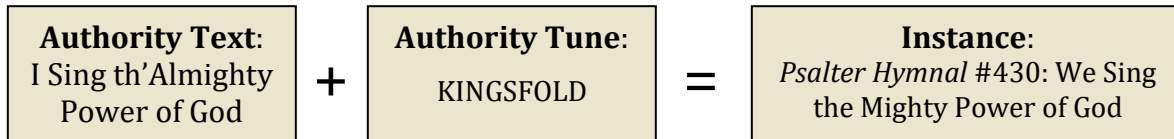
The numbers in parentheses after a hymn title indicate the number of times a song appears in a hymnal; the higher the number, the more popular it is:



Click pre-1978 off/on:



Difference between *authority* and *instance*:



Search *Texts* Tab:



View by Scripture:



Refine by scripture:



Tunes related to Texts:

TEXTS TUNES PEOPLE HYMNALS

Hymn Text Texts > I sing th' almighty

Title: I sing th'almighty p
Author: Isaac Watts, 1674-
Meter: 8.6.8.6
Language: English

ABOUT TUNES MEDIA INSTANCES

Related Tunes

- ELLACOMBE
- FOREST GREEN
- KINGSFOLD
- ORTONVILLE

TEXTS

Refine Search

First Line:
 Title:
 Refrain First Line:
 Author:
 Meter?:
 Scripture?:
 Gen 4
 Topic?:
 Source?:
 Date?:
 Full text?:
 Hymnal?:
 Media:
 Any
 Text?
 Audio?

View by: [Sc
 Search pre
 Showing 1 - 1
 First LI
 Genesis 4:f
 When C
 Add results fr

Using the *Tunes* Tab:

View by: **Tune name** All

Search pre-1979 (DNAH)

A B C D E F G H I J K L M N O P Q R S T U V W X Y Z
 a e i l n o r u y

TEXTS TUNES PE

Tunes > Browse

View by: **Tune name**

Search (H)

Showing

Tune name

- Tune name
- Composer
- Meter
- Incipit
- Key
- Source

Add text and key columns to the instance list

Instances (1 - 20 of 41) - view all

< Add/Remove Columns

Hymnal Instance ...<<	Text ...<<	Key	
Baptist Hymnal 1991 #120	O Sing a Song of Bethlehem	e minor	
The Book of Common Praise #426	I feel the winds of God to-day	e minor	

Look in right column for *media, music, info* (3 icons)



